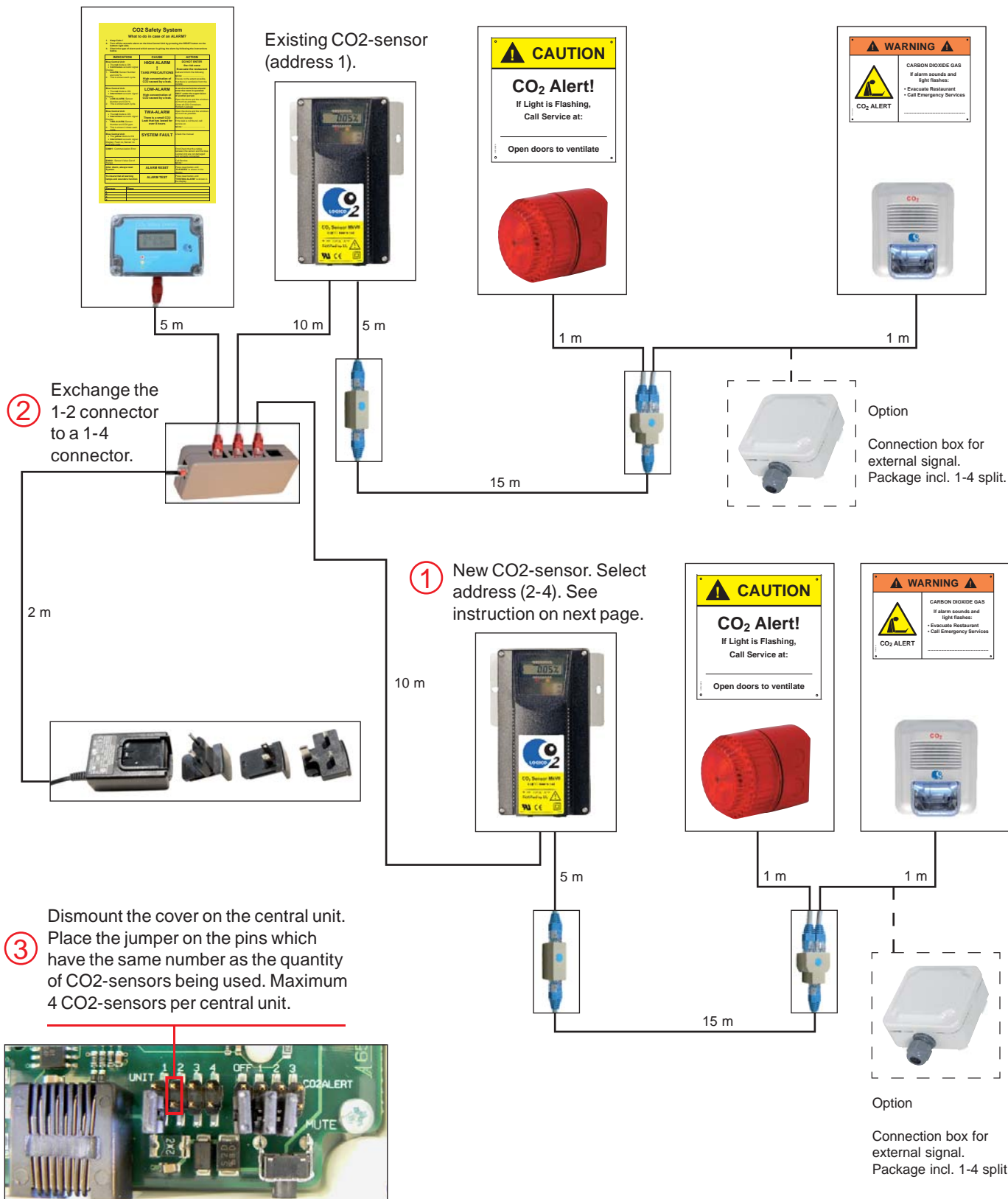


CO2 SET CONNECTION DIAGRAM



CONNECTION DIAGRAM FOR EXTRA CO2-SENSOR



CO2 SET CONNECTION DIAGRAM



CHANGE ADDRESS ON CO2 SENSOR



Standard view.

The display shows the current CO2, CO2-TWA and temperature.



1. Press the lower button until the error code is shown.



2. Press the lower button again until the current address is shown.

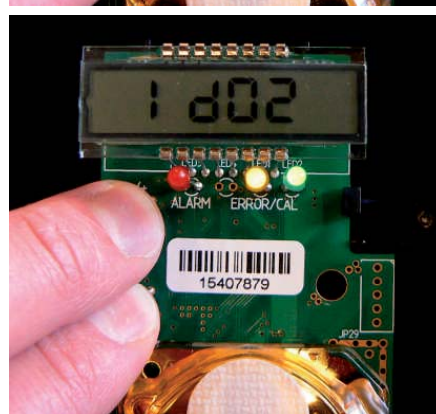


3. Press the upper button to change the address.

4. Press both buttons until SurE is shown.



5. Press both buttons until the new address is shown.



6. Press the lower button to show the standard view.

