

CO2 SET1 CE MKVII C

CO2 Safety System, Set1, (Celcius), incl warning lamp and horn/strobe



FUNCTION

The Carbon Dioxide (CO2) Safety System is designed to measure CO2 concentration in a confined space environment. It is designed to provide an alarm in the event that a CO2 level considered dangerous is measured, in the area being monitored.

The basic CO2 Safety System is a precision instrument comprising one central unit (with a digital display), one (up to four) sensor unit, one warning lamp and one horn/strobe each using microelectronic components. A separate electronic transformer supplies power to the system. The sensor unit uses infrared analysis for detecting CO2. The system provides visible indication of CO2 levels and temperature in the area where the remote sensor is located.

When installed properly, the CO2 Safety System will continuously monitor CO2 concentration and temperature wherever a sensor unit is located.

A green light emitting diode (LED) on the central unit indicates normal safe conditions. If ambient conditions at the sensor unit reach a CO2 concentration level of 1.5% (preset low alarm), the central unit will emit an intermittent audible tone and the « low alarm » red LED will blink. If equipped, a remote warning lamp will be activated. This will also happen if the TWA for 8 hours also surpasses 5000 ppm. The difference can be acknowledged on the display.

ORDERING EXAMPLE

Item code	Description
CO2 SET1 CE MKVII C	CO2 Safety System, Set1, (C), incl Beacon

CO2 SET1 CE MKVII C consists of:

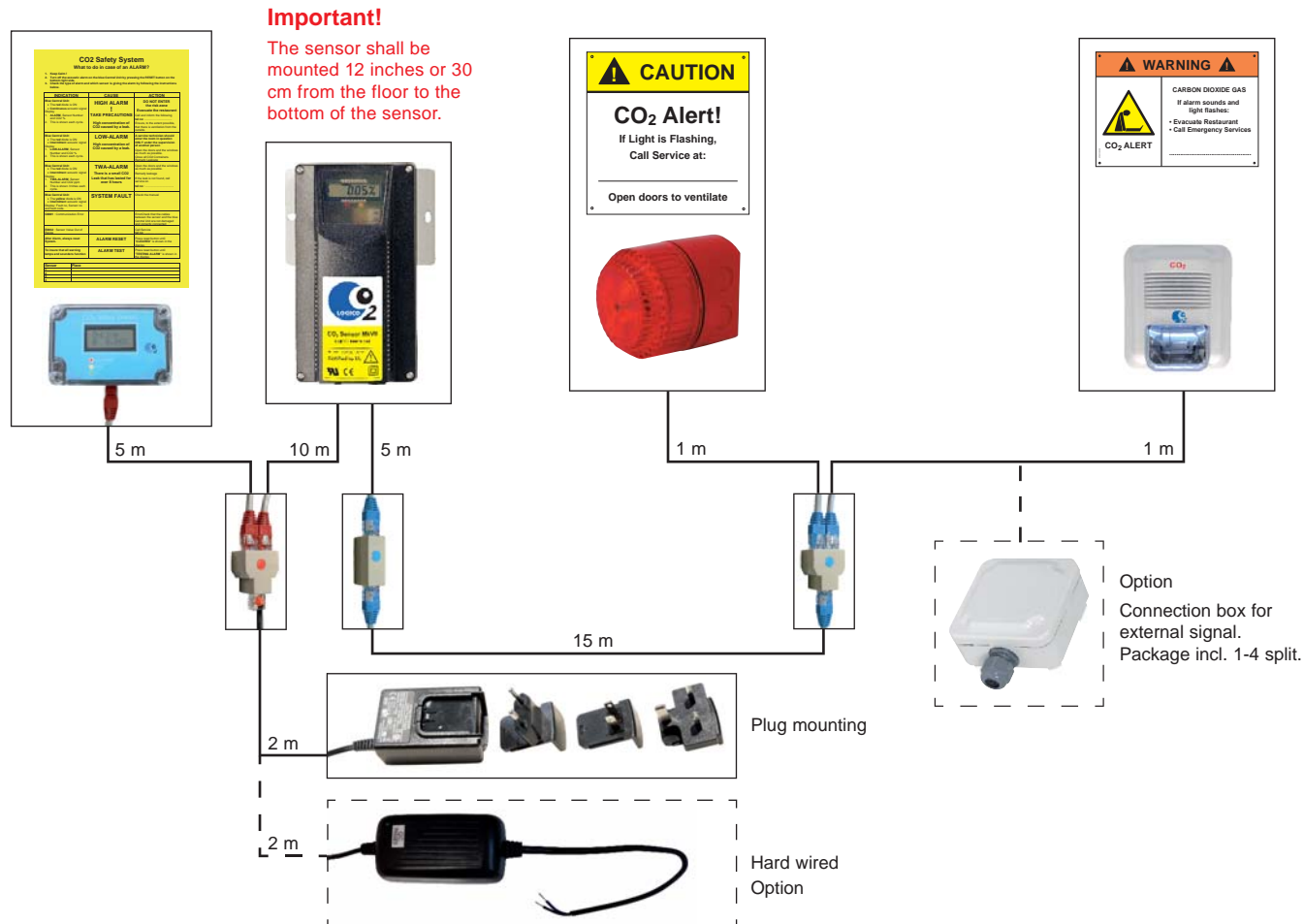
CO2 CENTRAL UNIT III	CO2 Central Unit III without cable	
CO2 SENSOR CE MKVII	CO2 Sensor, Celsius, without cables	
PROTECT BAR	Stainless steel protection bar for Sensor	
FLASH-24-R	24V warning lamp for MkVII incl, 1m cable	
HORN/STROBE CE	Horn/Strobe, White, 1m cable RJ45	
RJ45 CABLE R10M	Cable Red 10m RJ45	
RJ45 CABLE R5M	Cable Red 5m RJ46	
RJ45 CABLE B5M	Cable Blue 5m RJ45	
RJ45 CABLE B15M	Cable blue 15m RJ45	
RJ45 CABLE B1M	Cable blue 1m RJ46	
RJ45 1-2 SPLIT	RJ45 splitter 1-2	2 pcs
RJ45 1-1 EXTENSION	Extension connector	
TRANSFORMER MKVII	Transformer for CO2 SET1 MKVII	
CO2 STR	Lock-down strap for trafo	
CO2 ALERT SIGN	Sign, CO2 Alert	
CO2 INSTR SIGN	Sign, "what to do..."	
CO2 SIGN H/S EN	Sign, Horn/Strobe	
CO2 MANUAL EN	Installation manual CO2 Safety System EN	

CO2 SET1 CE MKVII C

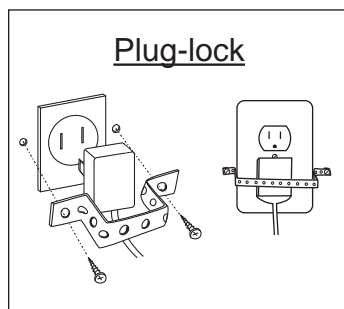
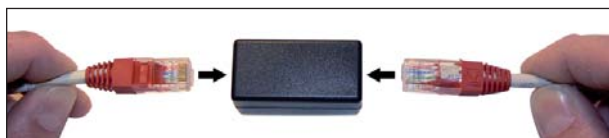
CO2 Safety System, Set1, (Celcius), incl warning lamp and horn/strobe



Connection diagram



CABLE EXTENSION CONNECTOR



Cut off the prolongations of the lock-release on the RJ45 connectors to secure unauthorized disconnection of the CO2 Safety System.



Use a small screwdriver to disconnect the RJ45 plugs.